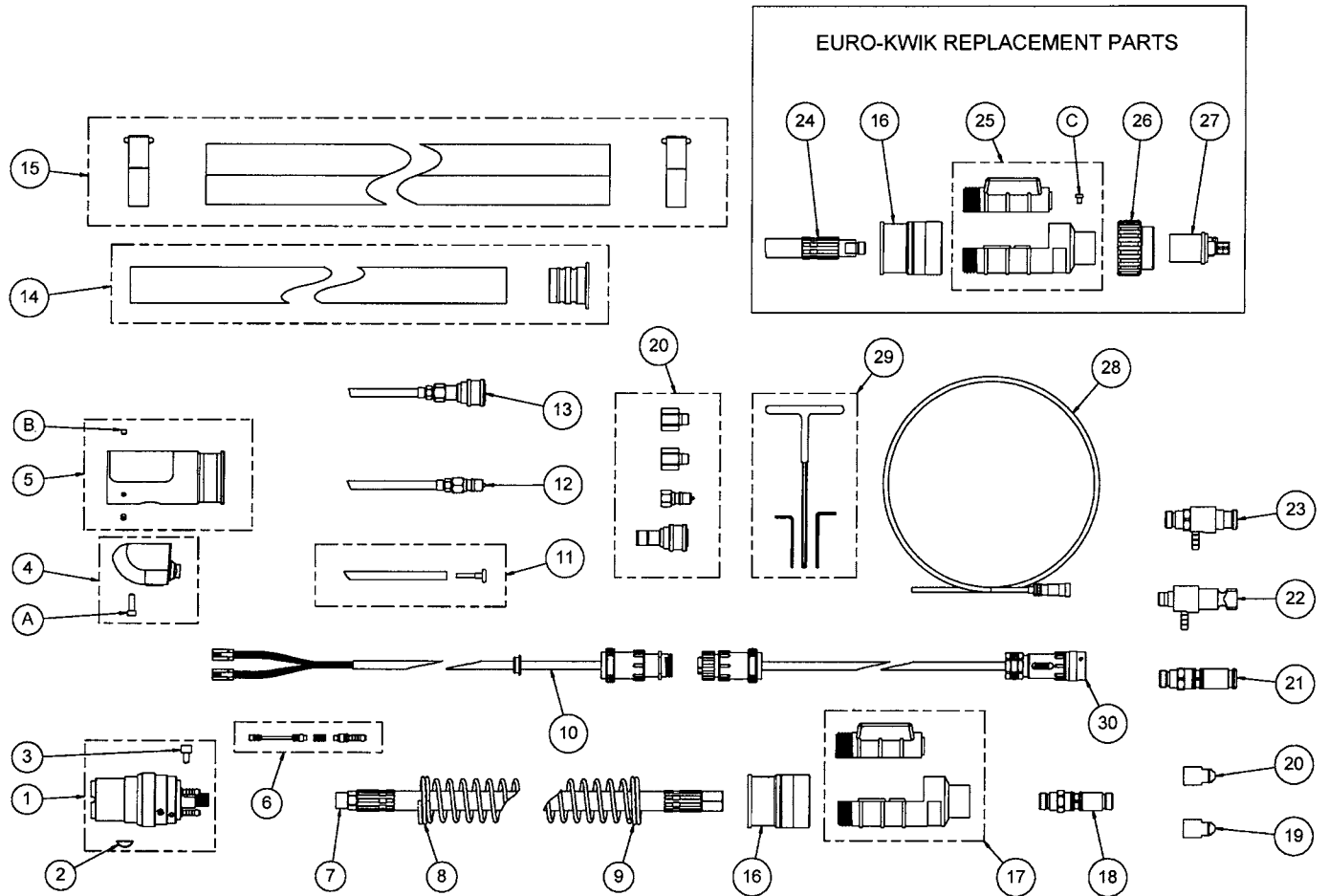


## QRWA & QRWAS Series Replacement Parts



## QRWA & QRWAS Series Replacement Parts

Item No.	Part No.	Stock No.	Description	
1	---	---	Cartridge Kit - (Includes Item #2, #3 and Hose Clamps)	
	QRWA-1BC	3045-1288	For use with 1-5/8" (41,28mm) Ø Mount – QRWA Series***	
	QRWA-2BC	3045-1289	For use with 1-1/2" (38,10mm) Ø Mount – QRWA Series	
	QRWA-3BC	3045-1290	For use with 1-3/8" (34,93mm) Ø Mount – QRWA Series	
	QRWA-4BC	3045-1291	For use with 36mm Ø Mount – QRWA Series	
	QRWAS-1BC	3045-1295	For use with 1-5/8" (41,28mm) Ø Mount – QRWAS Series***	
	QRWAS-2BC	3045-1296	For use with 1-1/2" (38,10mm) Ø Mount – QRWAS Series	
	QRWAS-3BC	3045-1297	For use with 1-3/8" (34,93mm) Ø Mount – QRWAS Series	
NS	QR106RLS	3045-1341	Replacement Locking Set Screw F/Torch Block (Pkg. of 5 ea.)	
	---	---	Key	
2	QTRMS-BS	3045-1156	For use with QRA-1BC (Pkg. Of 5 ea.)	
	QR3MS-BS	3045-1157	For use with QRA-2BC & QRA-3BC cartridge kits (Pkg. Of 5ea.)	
3	QR106-S	3045-1158	Conduit Screw (Pkg. Of 5 ea.)	
4	---	---	Inch Switch & E-Stop Housing Assembly (Includes Item "A")	
	QR-SH	3045-1159	For use with 1-5/8" Diameter Cartridge Kit	
	QR-SH3	3045-1476	For use with 1-3/8" Diameter Cartridge Kit	
5	QR-SH4	3045-1477	For use with 36mm Diameter Cartridge Kit	
	QR-FCS	3045-1160	Front case (Includes Item "B")	
6	QRW-CV	3045-1304	Check Valve Assembly (Includes O-rings)	
7	---	---	QRWA Power Cable Assy (Includes Hose Clamp)	
	QR403-CH	3045-1250	For use with 3 ft. (91cm) torch	
	QR4035-CH	3045-1251	For use with 3.5 ft. (1,07m) torch	
	QR404-CH	3045-1252	For use with 4 ft. ( 1,22m) torch	
	QR4045-CH	3045-1253	For use with 4.5 ft. (1,37m) torch	
	QR405-CH	3045-1254	For use with 5 ft. (1,52m) torch	
	QR4055-CH	3045-1255	For use with 5.5 ft. (1,68m) torch	
	QR406-CH	3045-1256	For use with 6 ft. (1,83m) torch	
	QR407-CH	3045-1257	For use with 7 ft. (2,13m) torch	
	QR408-CH	3045-1258	For use with 8 ft. (2,44m) torch	
	QR410-CH	3045-1259	For use with 10 ft. (3m) torch	
	QR412-CH	3045-1260	For use with 12 ft. (4m) torch	
	QR415-CH	3045-1261	For use with 15 ft. (5m) torch	
	8	---	---	Front Spring
		QR-SP	3045-1176	For use with 3 ft. (91cm) & 3.5 ft. (1,07m) torches
QR-SPR		3045-1177	For use with 4 ft. (1,22m) through 7 ft. (2,13m) torches	
9	QR-SPHD	3045-1178	For use with 8 ft. (2,44m) through 15 ft. (5m) torches	
	---	---	Rear Spring	
	QR-SP	3045-1176	For use with 3 ft. (91cm) & 3.5 ft. (1,07m) torches	
10	QR-SPHD	3045-1178	For use with 4 ft. (1,22m) through 15 ft. (5m) torches	
	---	---	Control Cable Assembly (Includes Hose Clamp)	
11	QR03-CC	3045-1181	For use with 3 ft. (91cm) torch	
	QR035-CC	3045-1182	For use with 3.5 ft. (1,07m) torch	
	QR04-CC	3045-1183	For use with 4 ft. ( 1,22m) torch	
	QR045-CC	3045-1184	For use with 4.5 ft. (1,37m) torch	
	QR05-CC	3045-1185	For use with 5 ft. (1,52m) torch	
	QR055-CC	3045-1186	For use with 5.5 ft. (1,68m) torch	
	QR06-CC	3045-1187	For use with 6 ft. (1,83m) torch	
	QR07-CC	3045-1188	For use with 7 ft. (2,13m) torch	
	QR08-CC	3045-1189	For use with 8 ft. (2,44m) torch	
	QR10-CC	3045-1190	For use with 10 ft. (3m) torch	
	QR12-CC	3045-1191	For use with 12 ft. (4m) torch	
	QR15-CC	3045-1192	For use with 15 ft. (5m) torch	
11	---	---	Purge Hose Assembly (Includes Hose Nipple Plug & Hose Clamp)	
	QR03-PH	3045-1200	For use with 3 ft. (91cm) torch	
	QR035-PH	3045-1201	For use with 3.5 ft. (1,07m) torch	
	QR04-PH	3045-1202	For use with 4 ft. ( 1,22m) torch	
	QR045-PH	3045-1203	For use with 4.5 ft. (1,37m) torch	
	QR05-PH	3045-1204	For use with 5 ft. (1,52m) torch	
	QR055-PH	3045-1205	For use with 5.5 ft. (1,68m) torch	
	QR06-PH	3045-1206	For use with 6 ft. (1,83m) torch	
QR07-PH	3045-1207	For use with 7 ft. (2,13m) torch		

## QRWA & QRWAS Series Replacement Parts (cont.)

Item No.	Part No.	Stock No.	Description
	QR08-PH	3045-1208	For use with 8 ft. (2,44m) torch
	QR10-PH	3045-1209	For use with 10 ft. (3m) torch
	QR12-PH	3045-1210	For use with 12 ft. (4m) torch
	QR15-PH	3045-1211	For use with 15 ft. (5m) torch
12	---	---	Water-Out Hose Assembly (Includes Hose Clamp)
	QRW03-WO	3045-1263	For use with 3 ft. (91cm) torch
	QRW035-WO	3045-1264	For use with 3.5 ft. (1,07m) torch
	QRW04-WO	3045-1265	For use with 4 ft. ( 1,22m) torch
	QRW045-WO	3045-1266	For use with 4.5 ft. (1,37m) torch
	QRW05-WO	3045-1267	For use with 5 ft. (1,52m) torch
	QRW055-WO	3045-1268	For use with 5.5 ft. (1,68m) torch
	QRW06-WO	3045-1269	For use with 6 ft. (1,83m) torch
	QRW07-WO	3045-1270	For use with 7 ft. (2,13m) torch
	QRW08-WO	3045-1271	For use with 8 ft. (2,44m) torch
	QRW10-WO	3045-1272	For use with 10 ft. (3m) torch
	QRW12-WO	3045-1273	For use with 12 ft. (4m) torch
	QRW15-WO	3045-1274	For use with 15 ft. (5m) torch
13	---	---	Water-In Hose Assembly (Includes Hose Clamps)
	QRW03-WI	3045-1275	For use with 3 ft. (91cm) torch
	QRW035-WI	3045-1276	For use with 3.5 ft. (1,07m) torch
	QRW04-WI	3045-1277	For use with 4 ft. ( 1,22m) torch
	QRW045-WI	3045-1278	For use with 4.5 ft. (1,37m) torch
	QRW05-WI	3045-1279	For use with 5 ft. (1,52m) torch
	QRW055-WI	3045-1280	For use with 5.5 ft. (1,68m) torch
	QRW06-WI	3045-1281	For use with 6 ft. (1,83m) torch
	QRW07-WI	3045-1282	For use with 7 ft. (2,13m) torch
	QRW08-WI	3045-1283	For use with 8 ft. (2,44m) torch
	QRW10-WI	3045-1284	For use with 10 ft. (3m) torch
	QRW12-WI	3045-1285	For use with 12 ft. (4m) torch
	QRW15-WI	3045-1286	For use with 15 ft. (5m) torch
14	---	---	Cable Cover Kit
	QR03-CV	3045-1213	For use with 3 ft. (91cm) torch
	QR035-CV	3045-1214	For use with 3.5 ft. (1,07m) torch
	QR04-CV	3045-1215	For use with 4 ft. ( 1,22m) torch
	QR045-CV	3045-1216	For use with 4.5 ft. (1,37m) torch
	QR05-CV	3045-1217	For use with 5 ft. (1,52m) torch
	QR055-CV	3045-1218	For use with 5.5 ft. (1,68m) torch
	QR06-CV	3045-1219	For use with 6 ft. (1,83m) torch
	QR07-CV	3045-1220	For use with 7 ft. (2,13m) torch
	QR08-CV	3045-1221	For use with 8 ft. (2,44m) torch
	QR10-CV	3045-1222	For use with 10 ft. (3m) torch
	QR12-CV	3045-1223	For use with 12 ft. (4m) torch
	QR15-CV	3045-1224	For use with 15 ft. (5m) torch
15	---	---	Outer Cover Assembly (Includes Nylon Cable Tie – 2 ea.)
	QR03-LC	3045-1226	For use with 3 ft. (91cm) torch
	QR035-LC	3045-1227	For use with 3.5 ft. (1,07m) torch
	QR04-LC	3045-1228	For use with 4 ft. ( 1,22m) torch
	QR045-LC	3045-1229	For use with 4.5 ft. (1,37m) torch
	QR05-LC	3045-1230	For use with 5 ft. (1,52m) torch
	QR055-LC	3045-1231	For use with 5.5 ft. (1,68m) torch
	QR06-LC	3045-1232	For use with 6 ft. (1,83m) torch
	QR07-LC	3045-1233	For use with 7 ft. (2,13m) torch
	QR08-LC	3045-1234	For use with 8 ft. (2,44m) torch
	QR010-LC	3045-1235	For use with 10 ft. (3m) torch
	QR012-LC	3045-1236	For use with 12 ft. (4m) torch
	QR015-LC	3045-1237	For use with 15 ft. (5m) torch
16	QR-RC	3045-1238	Rear Spring Cap
17	QRWA-CS	3045-1293	QRWA Rear Case Assembly
18	R176MH	2060-2184	Miller® Connector Plug (Includes Items #19 & #20)
	R174MH	2035-2109	Miller Connector Plug (Includes Items #19 & 20)

\*\*\* Standard On All QRWA & QRWAS Torch Body and Cable Assemblies

Miller is a registered trademark of Illinois Tool Works, Inc. The afore mentioned registered trademark is in no way affiliated with Tweco Robotics or Thermadyne Industries, Inc. Tweco is a registered trademark of Thermadyne Industries, Inc.

## QRWA & QRWAS Series Replacement Parts (cont.)

Item No.	Part No.	Stock No.	Description	
19	R175M-N045	2050-2181	Miller® Plug Nipple, .045" (1,0mm) Wire (Use w/R176MH)***	
	R174M-N045	2040-2192	Miller Plug Nipple, .045" (1,0mm) Wire (Use w/R174MH)	
20	R175M-N116	2050-2182	Miller Plug Nipple, .062" (1,6mm) Wire (Use w/R176MH)***	
	R174M-N116	2040-2191	Miller Plug Nipple, .062" (1,6mm) Wire (Use w/R174MH)	
21	176S-H	2060-2177	Tweco® Connector Plug***	
	350-174H	2035-2110	Tweco Connector Plug (Uses R44 series Conduit)	
22	350-174PH	2035-2172	Panasonic® Connector Plug (Uses R44 series Conduit )	
23	QTR176LH	2086-2624	Lincoln® Connector Plug (2.71" – 68,83mm OAL.)***	
	EL176LH	2060-2680	Lincoln Connector Plug (3.84" – 97,54mm OAL)	
	QTR174LH	2086-2623	Lincoln Connector Plug (Uses R44 series Conduit)	
24	---	---	XQRWA Power Cable Assy (Includes Hose Clamp)	
	XQR403-CH	3045-1350	For use with 3 ft. (91cm) torch	
	XQR4035-CH	3045-1351	For use with 3.5 ft. (1,07mm) torch	
	XQR404-CH	3045-1352	For use with 4 ft. ( 1,22m) torch	
	XQR4045-CH	3045-1353	For use with 4.5 ft. (1,37m) torch	
	XQR405-CH	3045-1354	For use with 5 ft. (1,52m) torch	
	XQR4055-CH	3045-1355	For use with 5.5 ft. (1,68m) torch	
	XQR406-CH	3045-1356	For use with 6 ft. (1,83m) torch	
	XQR407-CH	3045-1357	For use with 7 ft. (2,13m) torch	
	XQR408-CH	3045-1358	For use with 8 ft. (2,44m) torch	
	XQR410-CH	3045-1359	For use with 10 ft. (3m) torch	
	XQR412-CH	3045-1360	For use with 12 ft. (4m) torch	
	XQR415-CH	3045-1361	For use with 15 ft. (5m) torch	
	25	XQRWA-CS	3045-1294	Euro-Kwik Rear Case Assembly (Includes Item "C")
	26	174X-2S	2040-2193	Euro-Kwik nut
27	E171-1TS	2011-2172	Euro-Kwik adapter	
28	---	---	Conduit (Refer to Page 26)	
29	QTR-TOOLS	2062-2034	Tool kit	
30	---	---	E-stop Jumper Assembly	
	QRJC-010	3045-1241	Without Connector – 3 ft. (91cm) Long	
	QRJC-020	3045-1242	With Burndy Connector – 3 ft. (91cm) Long	
	QRJC-030	3045-1243	With 4-pin Amp Connector – 3 ft. (91cm) Long	
	QRJC-040	3045-1244	With 5-pin DDK Connector - 3ft. (91cm) Long	
	QRJC-050	3045-1245	With 5-pin DDK Connector (Panasonic®) - 3ft. long (91cm)	
31	400LK-QC	2044-2000	Quick Connector Male & Female	

\*\*\* Standard On All QRWA & QRWAS Torch Body and Cable Assemblies

## Standard Fasteners

These standard fasteners are not sellable items and should be purchased at a local hardware or fastener supply house.

Item No.	Description
<b>A</b>	#10-32 x 5/8" Socket Head Cap Screw
<b>B</b>	#10-32 x 3/16" Stainless Cup Point Set Screw
<b>C</b>	M4 x .07 Head Screw

Lincoln is a registered trademark of Lincoln Electric Co. Miller is a registered trademark of Illinois Tool Works, Inc. Panasonic is a registered trademark of Matsushita Electric Industrial Co., Ltd. The afore mentioned registered trademarks are in no way affiliated with Tweco Robotics or Thermadyne Industries, Inc. Tweco is a registered trademark of Thermadyne Industries, Inc.