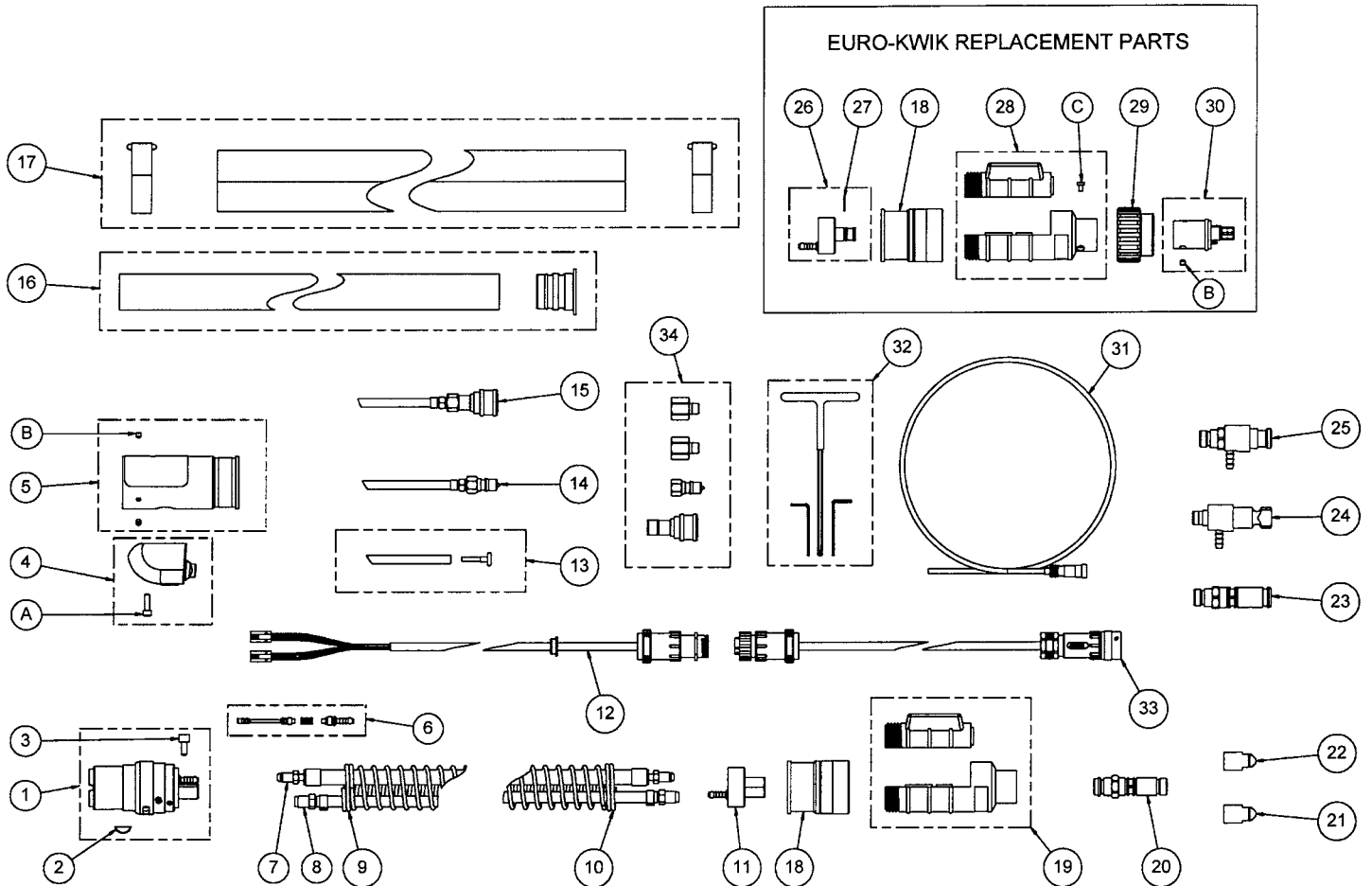


# QRW & QRWS Series Replacement Parts



## QRW & QRWS Series Replacement Parts

Item No.	Part No.	Stock No.	Description
1	---	---	Cartridge Kit - (Includes Item #2, #3, and Hose Clamps)
	QRW-1BC	3045-1300	For use with 1-5/8" (41,28mm) Ø Mount – QRW Series***
	QRW-2BC	3045-1301	For use with 1-1/2" (38,10mm) Ø Mount – QRW Series
	QRW-3BC	3045-1302	For use with 1-3/8" (34,93mm) Ø Mount – QRW Series
	QRW-4BC	3045-1303	For use with 36mm Ø Mount – QRW Series
	QRWS-1BC	3045-1342	For use with 1-5/8" (41,28mm) Ø Mount – QRWS Series***
	QRWS-2BC	3045-1343	For use with 1-1/2" (38,10mm) Ø Mount – QRWS Series
	QRWS-3BC	3045-1344	For use with 1-3/8" (34,93mm) Ø Mount – QRWS Series
	QRWS-4BC	3045-1345	For use with 36mm Ø Mount – QRWS Series
NS	QR106RLS	3045-1341	Replacement Locking Set Screw F/Torch Block (Pkg. of 5 ea.)
2	---	---	Key
	QTRMS-BS	3045-1156	For use with QRA-1BC Cartridge Kit (Pkg. of 5 ea.)
	QR3MS-BS	3045-1157	For use with QRA-2BC & QRA-3BC Cartridge Kits (Pkg. of 5 ea.)
3	QRW106-S	3045-1340	Conduit Screw (Pkg. Of 5 ea.)
4	---	---	Inch Switch & E-Stop Housing Assembly (Includes Item "A")
	QR-SH	3045-1159	For use with 1-5/8" Diameter Cartridge Kit
	QR-SH3	3045-1476	For use with 1-3/8" Diameter Cartridge Kit
	QR-SH4	3045-1477	For use with 36mm Diameter Cartridge Kit
5	QR-FCS	3045-1160	Front Case (Includes Item "B")
6	QRW-CV	3045-1304	Check Valve Assembly (Includes O-rings)
7	---	---	Conduit/Gas Hose Assy (Includes Hose Clamps)
	QRW603-CGH	3045-1310	For use with 3 ft. (91cm) torch
	QRW6035-CGH	3045-1311	For use with 3.5 ft. (1,07m) torch
	QRW604-CGH	3045-1312	For use with 4 ft. (1,22m) torch
	QRW6045-CGH	3045-1313	For use with 4.5 ft. (1,37m) torch
	QRW605-CGH	3045-1314	For use with 5 ft. (1,52m) torch
	QRW6055-CGH	3045-1315	For use with 5.5 ft. (1,68m) torch
	QRW606-CGH	3045-1316	For use with 6 ft. (1,83m) torch
	QRW607-CGH	3045-1317	For use with 7 ft. (2,13m) torch
	QRW608-CGH	3045-1318	For use with 8 ft. (2,44m) torch
	QRW610-CGH	3045-1319	For use with 10 ft. (3m) torch
	QRW612-CGH	3045-1320	For use with 12 ft. (4m) torch
	QRW615-CGH	3045-1321	For use with 15 ft. (5m) torch
8	---	---	QRW Power Cable Assy (Includes Hose Clamp)
	QRW603-PC	3045-1325	For use with 3 ft. (91cm) torch
	QRW6035-PC	3045-1326	For use with 3.5 ft. (1,07m) torch
	QRW604-PC	3045-1327	For use with 4 ft. (1,22m) torch
	QRW6045-PC	3045-1328	For use with 4.5 ft. (1,37m) torch
	QRW605-PC	3045-1329	For use with 5 ft. (1,52m) torch
	QRW6055-PC	3045-1330	For use with 5.5 ft. (1,68m) torch
	QRW606-PC	3045-1331	For use with 6 ft. (1,83m) torch
	QRW607-PC	3045-1332	For use with 7 ft. (2,13m) torch
	QRW608-PC	3045-1333	For use with 8 ft. (2,44m) torch
	QRW610-PC	3045-1334	For use with 10 ft. (3m) torch
	QRW612-PC	3045-1335	For use with 12 ft. (4m) torch
	QRW615-PC	3045-1336	For use with 15 ft. (5m) torch
9	---	---	Front Spring
	QR-SP	3045-1176	For use with 3 ft. (91cm) & 3.5 (1,07m) torches
	QR-SPR	3045-1177	For use with 4 ft. (1,22m) through 7 ft. (2,13m) torches
	QR-SPHD	3045-1178	For use with 8 ft. (2,44m) through 15 ft. (5m) torches
10	---	---	Rear Spring
	QR-SP	3045-1176	For use with 3 ft. (91cm) & 3.5 ft. (1,07m) torches
	QR-SPHD	3045-1178	For use with 4 ft. (1,22m) through 15 ft. (5m) torches
11	QRW174	3045-1306	Rear Block Assembly (Includes Hose Clamps)
12	---	---	Control Cable Assembly (Includes Hose Clamp)
	QR03-CC	3045-1181	For use with 3 ft. (91cm) torch
	QR035-CC	3045-1182	For use with 3.5 ft. (1,07m) torch
	QR04-CC	3045-1183	For use with 4 ft. (1,22m) torch
	QR045-CC	3045-1184	For use with 4.5 ft. (1,37m) torch
	QR05-CC	3045-1185	For use with 5 ft. (1,52m) torch
	QR055-CC	3045-1186	For use with 5.5 ft. (1,68m) torch

\*\*\* Standard On All QRW & QRWS Torch Body and Cable Assemblies

## QRW & QRWS Series Replacement Parts (cont.)

Item No.	Part No.	Stock No.	Description
	QR06-CC	3045-1187	For use with 6 ft. (1,83m) torch
	QR07-CC	3045-1188	For use with 7 ft. (2,13m) torch
	QR08-CC	3045-1189	For use with 8 ft. (2,44m) torch
	QR10-CC	3045-1190	For use with 10 ft. (3m) torch
	QR12-CC	3045-1191	For use with 12 ft. (4m) torch
	QR15-CC	3045-1192	For use with 15 ft. (5m) torch
13	---	---	Purge Hose Assembly (Includes Hose Plug Nipple & Hose Clamp)
	QR03-PH	3045-1200	For use with 3 ft. (91cm) torch
	QR035-PH	3045-1201	For use with 3.5 ft. (1,07m) torch
	QR04-PH	3045-1202	For use with 4 ft. ( 1,22m) torch
	QR045-PH	3045-1203	For use with 4.5 ft. (1,37m) torch
	QR05-PH	3045-1204	For use with 5 ft. (1,52m) torch
	QR055-PH	3045-1205	For use with 5.5 ft. (1,68m) torch
	QR06-PH	3045-1206	For use with 6 ft. (1,83m) torch
	QR07-PH	3045-1207	For use with 7 ft. (2,13m) torch
	QR08-PH	3045-1208	For use with 8 ft. (2,44m) torch
	QR10-PH	3045-1209	For use with 10 ft. (3m) torch
	QR12-PH	3045-1210	For use with 12 ft. (4m) torch
	QR15-PH	3045-1211	For use with 15 ft. (5m) torch
14	QRW00-WO	3045-1262	Water-Out Hose Assy - (Includes Hose Clamp) – For All Torches
15	---	---	Water-In Hose Assembly (Includes Hose Clamp)
	QRW03-WI	3045-1275	For use with 3 ft. (91cm) torch
	QRW035-WI	3045-1276	For use with 3.5 ft. (1,07m) torch
	QRW04-WI	3045-1277	For use with 4 ft. ( 1,22m) torch
	QRW045-WI	3045-1278	For use with 4.5 ft. (1,37m) torch
	QRW05-WI	3045-1279	For use with 5 ft. (1,52m) torch
	QRW055-WI	3045-1280	For use with 5.5 ft. (1,68m) torch
	QRW06-WI	3045-1281	For use with 6 ft. (1,83m) torch
	QRW07-WI	3045-1282	For use with 7 ft. (2,13m) torch
	QRW08-WI	3045-1283	For use with 8 ft. (2,44m) torch
	QRW10-WI	3045-1284	For use with 10 ft. (3m) torch
	QRW12-WI	3045-1285	For use with 12 ft. (4m) torch
	QRW15-WI	3045-1286	For use with 15 ft. (5m) torch
16	---	---	Cable Cover Kit
	QR03-CV	3045-1213	For use with 3 ft. (91cm) torch
	QR035-CV	3045-1214	For use with 3.5 ft. (1,07m) torch
	QR04-CV	3045-1215	For use with 4 ft. ( 1,22m) torch
	QR045-CV	3045-1216	For use with 4.5 ft. (1,37m) torch
	QR05-CV	3045-1217	For use with 5 ft. (1,52m) torch
	QR055-CV	3045-1218	For use with 5.5 ft. (1,68m) torch
	QR06-CV	3045-1219	For use with 6 ft. (1,83m) torch
	QR07-CV	3045-1220	For use with 7 ft. (2,13m) torch
	QR08-CV	3045-1221	For use with 8 ft. (2,44m) torch
	QR10-CV	3045-1222	For use with 10 ft. (3m) torch
	QR12-CV	3045-1223	For use with 12 ft. (4m) torch
	QR15-CV	3045-1224	For use with 15 ft. (5m) torch
17	---	---	Outer Cover Assembly (Includes Nylon Cable Tie - 2 ea.)
	QR03-LC	3045-1226	For use with 3 ft. (91cm) torch
	QR035-LC	3045-1227	For use with 3.5 ft. (1,07m) torch
	QR04-LC	3045-1228	For use with 4 ft. ( 1,22m) torch
	QR045-LC	3045-1229	For use with 4.5 ft. (1,37m) torch
	QR05-LC	3045-1230	For use with 5 ft. (1,52m) torch
	QR055-LC	3045-1231	For use with 5.5 ft. (1,68m) torch
	QR06-LC	3045-1232	For use with 6 ft. (1,83m) torch
	QR07-LC	3045-1233	For use with 7 ft. (2,13m) torch
	QR08-LC	3045-1234	For use with 8 ft. (2,44m) torch
	QR10-LC	3045-1235	For use with 10 ft. (3m) torch
	QR12-LC	3045-1236	For use with 12 ft. (4m) torch
	QR15-LC	3045-1237	For use with 15 ft. (5m) torch
18	QR-RC	3045-1238	Rear Spring Cap
19	QRW-CS	3045-1307	Water-cooled Rear Case Assembly

## QRW & QRWS Series Replacement Parts (cont.)

Item No.	Part No.	Stock No.	Description
20	R176MH	2060-2184	Miller® Connector Plug (Includes Items #22 & #23)***
	R174MH	2035-2109	Miller Connector Plug (Includes Items #22 & #23)
21	R175M-N045	2050-2181	Miller Plug Nipple, .045" (1,0mm) Wire (Use w/R176MH)***
	R174M-N045	2040-2192	Miller Plug Nipple, .045" (1,0mm) Wire (Use w/R174MH)
22	R175M-N116	2050-2182	Miller Plug Nipple, .062" (1,6mm) Wire (Use w/R176MH)***
	R174M-N116	2040-2191	Miller Plug Nipple, .062" (1,6mm) Wire (Use w/R174MH)
23	176S-H	2060-2177	Tweco® Connector Plug***
	350-174H	2035-2110	Tweco Connector Plug (Uses R44 series Conduit)
24	350-174PH	2035-2172	Panasonic® Connector Plug (Uses R44 series Conduit)
25	QTR176LH	2086-2624	Lincoln® Connector Plug (2.71" – 68,83mm OAL)***
	EL176LH	2060-2680	Lincoln Connector Plug (3.84" – 97,54mm OAL)
	QTR174LH	2086-2623	Lincoln Connector Plug (Uses R44 series Conduit)
26	XQRW174	3045-1308	Water-cooled Euro-Kwik Rear Block Assy (Includes Hose Clamp)
27	WC174X-B2S	2044-2185	O-ring (Pkg. of 5 ea.)
28	XQRW-CS	3045-1309	Euro-Kwik Rear Case Assembly (Includes Item "C")
29	174X-2S	2040-2193	Euro-Kwik Nut
30	WC174X-IS	3045-1339	Euro-Kwik Adapter
31	---	---	Conduit (Refer to Page 26)
32	QTR-TOOLS	2062-2034	Tool Kit
33	---	---	E-Stop Jumper Cable Assembly
	QRJC-010	3045-1241	Without Connector – 3 ft. (91cm) Long
	QRJC-020	3045-1242	With Burndy Connector – 3 ft. (91cm) Long
	QRJC-030	3045-1243	With 4-pin Amp Connector – 3 ft. (91cm) Long
	QRJC-040	3045-1244	With 5-pin DDK Connector - 3ft. (91cm) Long
	QRJC-050	3045-1245	With 5-pin DDK Connector (Panasonic®) - 3ft. long (91cm)
34	400LK-QC	2044-2000	Quick Connector Male & Female

\*\*\* Standard On All QRW & QRWS Torch Body and Cable Assemblies

## Standard Fasteners

These standard fasteners are not sellable items and should be purchased at a local hardware or fastener supply house.

Item No.	Description
<b>A</b>	#10-32 x 5/8" Socket Head Cap Screw
<b>B</b>	#10-32 x 3/16" Stainless Cup Point Set Screw
<b>C</b>	M4 x .07 Head Screw

Lincoln is a registered trademark of Lincoln Electric Co. Miller is a registered trademark of Illinois Tool Works, Inc. Panasonic is a registered trademark of Matsushita Electric Industrial Co., Ltd. The afore mentioned registered trademarks are in no way affiliated with Tweco Robotics or Thermadyne Industries, Inc. Tweco is a registered trademark of Thermadyne Industries, Inc.