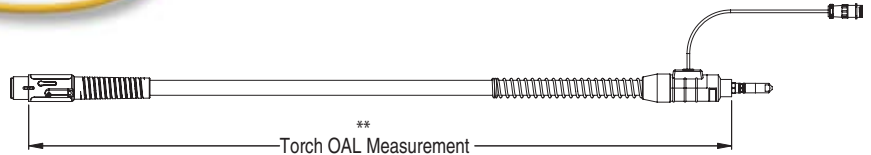


## QRL Series 400 Amp Robotic Mig Gun



Standard Torch Body **	Part No.	Stock No.
With 4 ft. / 1,22m Cable Assembly w/ Tweco® Rear Connector	QRL404	3041-1750
With 4 ft. / 1,22m Cable Assembly w/ Miller® Rear Connector	QRL404M	3041-1751
With 4 ft. / 1,22m Cable Assembly w/ Lincoln® Rear Connector	QRL404L	3041-1752
With 4 ft. / 1,22m Cable Assembly w/ Euro-Kwik Rear Connector	XQRL404	3041-1753
With 6 ft. / 1,83m Cable Assembly w/ Tweco Rear Connector	QRL406	3041-1754
With 6 ft. / 1,83m Cable Assembly w/ Miller Rear Connector	QRL406M	3041-1755
With 6 ft. / 1,83m Cable Assembly w/ Lincoln Rear Connector	QRL406L	3041-1756
With 6 ft. / 1,83m Cable Assembly w/ Euro-Kwik Rear Connector	XQRL406	3041-1757

**IMPORTANT:** A separate E-stop Jumper Cable must be ordered to allow the use of the E-stop feature. The assembly connects the Control Cable extending out from the rear end of the torch to the robot control. There are five (5) different E-stop Jumper Cable Assemblies available:

- Part No. QRJC-010 (Stock No. 3045-1241) - E-stop Jumper Cable Assembly w/o Connector (Generic) - 3 ft. long (91cm)
- Part No. QRJC-020 (Stock No. 3045-1242) - E-stop Jumper Cable Assembly w/ Burndy Connector (ABB®) - 3 ft. long (91cm)
- Part No. QRJC-030 (Stock No. 3045-1243) - E-stop Jumper Cable Assembly w/ 4-pin Amp Connector (Motoman®) - 3 ft. long (91cm)
- Part No. QRJC-040 (Stock No. 3045-1244) - E-stop Jumper Cable Assembly w/ 5-pin DDK Connector (Fanuc®) - 3 ft. long (91cm)
- Part No. QRJC-050 (Stock No. 3045-1245) - E-stop Jumper Cable Assembly w/ 5-pin DDK Connector (Panasonic®) - 3 ft. long (91cm)

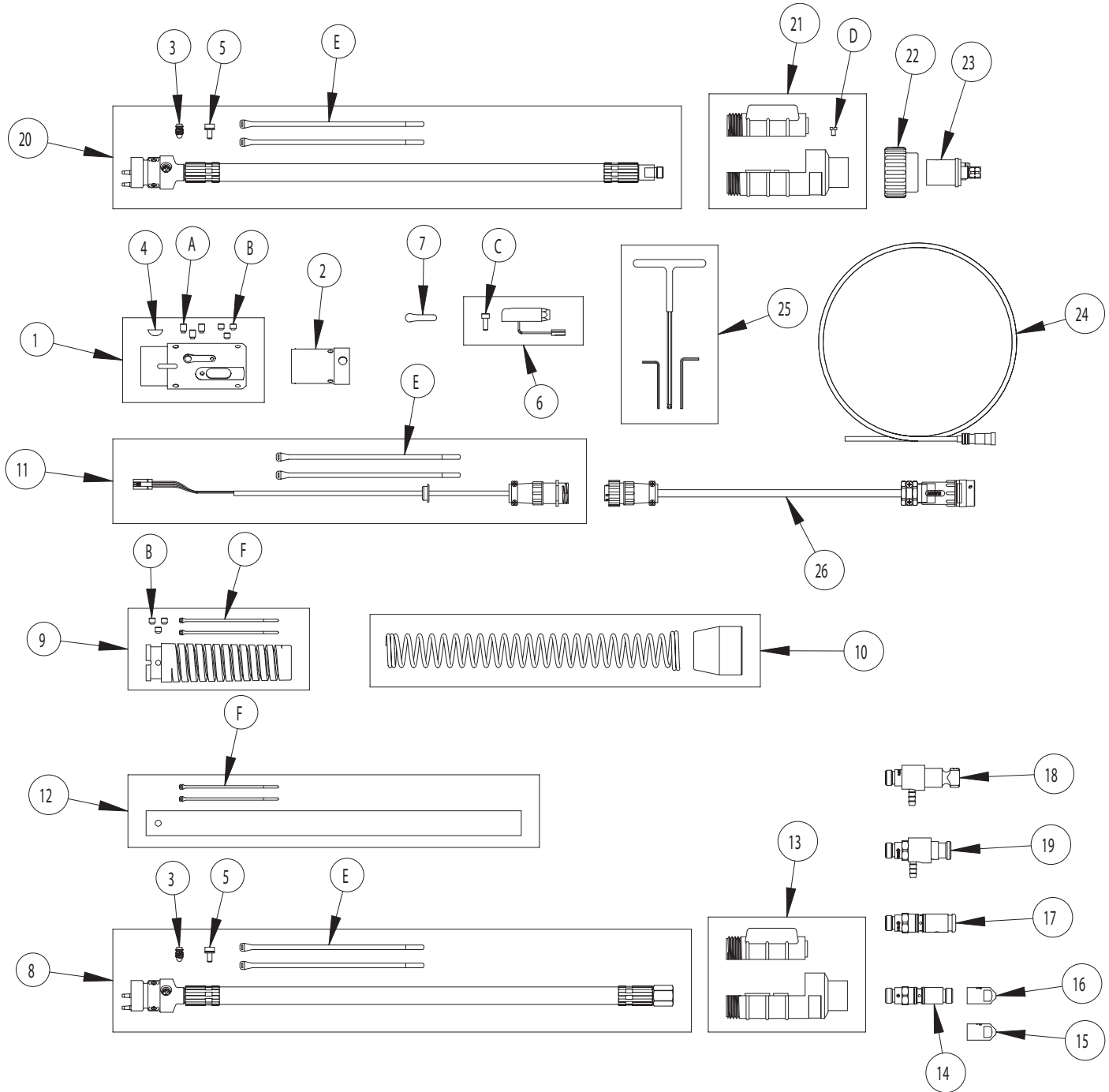
**NOTE:** An additional E-stop Cable Assembly must be purchased separately when using the QRL Series MIG gun with the RDM Series Deflection Mount. This cable connects the MIG gun to the RDM deflection mount allowing the device to detect a collision between the conductor tube and the fixture or part.

Part No. RDML-2000-JC (Stock No. 3044-1860) - E-stop Jumper Cable Assembly



ABB is a registered trademark of ABB Automation Products GmbH. FANUC is a registered trademark of FANUC Robotics America, Inc. Lincoln is a registered trademark of Lincoln Electric Co. Miller is a registered trademark of Illinois Tool Works, Inc. Motoman is a registered trademark of Motoman Inc. Panasonic is a registered trademark of Matsushita Electric Industrial Co., Ltd. The afore mentioned registered trademarks are in no way affiliated with Tweco Robotics or Thermadyne Industries, Inc. Tweco is a registered trademark of Thermadyne Industries, Inc.

## QRL Series Replacement Parts



## QRL Series Replacement Parts

Item No.	Part No.	Stock No.	Description
1	QRLMS	3045-1709	QRL Mount Sleeve (includes 4, A & B)
2	QRLH	3045-1710	QRL Case
3	QR106-RLS	3045-1341	Conductor Tube Locking Screw (Qty. 5)
4	QTRMS-BS	3045-1156	Woodruff Keys (Qty. 5)
5	QRL106S	3045-1347	Conduit Screw
6	QRLRH	3045-1706	QRL Receptacle Housing Assembly (includes C)
7	QRLCS	3045-1700	Locking Screw Cover for QRL series
8	QRL1004PC	3045-1702	QRL Series Front Block & Cable (4 ft. long) (includes 3, E & 5)
	QRL1006PC	3045-1703	QRL Series Front Block & Cable (6 ft. long) (includes 3, E & 5)
9	QRL-SPS	3045-1199	Front Strain Relief Spring (includes B & F)
10	QRLRCS	3045-1701	QRL Strain Relief Cap & Spring
11	QRL04CC	3045-1704	QRL Control Cable Assembly (4 ft. long) (includes E)
	QRL06CC	3045-1705	QRL Control Cable Assembly (6 ft. long) (includes E)
12	QRL04J	3045-1707	QRL Cable Cover (4 ft. long) (includes F)
	QRL06J	3045-1708	QRL Cable Cover (6 ft. long) (includes F)
13	QRA-CS	3045-1239	Rear Case Assembly
14	R174MH	2035-2109	Miller® Connector Plug
	R176MH	2060-2184	Miller Connector Plug
15	R175M-N045	2050-2181	Miller Plug Nipple, 0.045" (1,0mm) Wire (Use w/R176MH)
	R174M-N045	2040-2192	Miller Plug Nipple, 0.045" (1,0mm) Wire (Use w/R174MH)
16	R175M-N116	2050-2182	Miller Plug Nipple, 0.062" (1,6mm) Wire (Use w/R176MH)
	R174M-N116	2040-2191	Miller Plug Nipple, 0.062" (1,6mm) Wire (Use w/R174MH)
17	176S-H	2060-2177	Tweco® Connector Plug
	350-174H	2035-2110	Tweco Connector Plug (Uses R44 series Conduit)
18	QTR176LH	2086-2624	Lincoln® Connector Plug (2.71" - 68,83mm OAL.)
	EL176LH	2060-2680	Lincoln Connector Plug (3.84" - 97,54mm OAL.)
19	350-174PH	2035-2172	Panasonic® Connector Plug (Uses R44 series Conduit)
20	XQRL1004PC	3045-1395	QRL Front Block & Cable (4 ft. long-Euro) (includes 3, E & 5)
	XQRL1006PC	3045-1396	QRL Front Block & Cable (6 ft. long-Euro) (includes 3, E & 5)
21	XQRA-CS	3045-1240	Rear Case Assembly (includes D)
22	174X-2S	2040-2177	Euro-Kwik Nut
23	E171-1TS	2011-2172	Euro-Kwik Adapter
24			Conduit (refer to page 26)
25	QTR-TOOLS	2062-2034	Tool Kit
26			E-stop Jumper Cable Assembly
	QRJC-010	3045-1241	Without Connector - 3 ft. (91cm) Long
	QRJC-020	3045-1242	With Burndy Connector - 3 ft. (91 cm) Long
	QRJC-030	3045-1243	With 4-pin Amp Connector - 3 ft. (91 cm) Long
	QRJC-040	3045-1244	With 5-pin DDK Connector - 3 ft. (91 cm) Long
	QRJC-050	3045-1245	With 5-pin DDK Connector - 3 ft. (91 cm) Long

## Standard Non-Sellable Parts

These standard parts are not sellable items and should be purchased at a local hardware or fastener supplier.

Item No.	Description
A	1/4 - 20 x 3/8 Half Dog Point Set Screw
B	1/4 - 20 x 1/4 Flat Point Socket Head Set Screw
C	10 - 32 x 1/2 SS Socket Head Cap Screw
D	M4 x 0.7 x 5.9 Cheese Head Screw
E	7.6L x 0.190W Cable Tie Panduit CBR2S
F	4.1L x 0.098W Cable Tie Panduit CBR1M

Lincoln is a registered trademark of Lincoln Electric Co. Miller is a registered trademark of Illinois Tool Works, Inc. Panasonic is a registered trademark of Matsushita Electric Industrial Co., Ltd. The afore mentioned registered trademarks are in no way affiliated with Tweco Robotics or Thermadyne Industries, Inc. Tweco is a registered trademark of Thermadyne Industries, Inc.