

DESCRIPTION

Stoody 160D wire consists of coarse and fine tungsten carbide particles in a nickel silicon boron matrix. This microstructure gives Stoody 160D superior toughness, corrosion and excellent fine particle erosion resistance in slurry type applications. Micro constituents add to increased wear resistance.

TYPICAL DEPOSIT CHARACTERISTICS

Abrasion Resistance	Excellent
Matrix Hardness Single Layer	HRC 50 - 60
Matrix Hardness Two Layer	HRC 50 - 60
Deposit Layers	2 Maximum
Surface Cross Check	Depends on application
Machinability	No

TYPICAL APPLICATIONS

Typical applications include:

- Dredge rotary cutter heads
- Pipe ID & filtering screens
- Drill bits & stabilizers

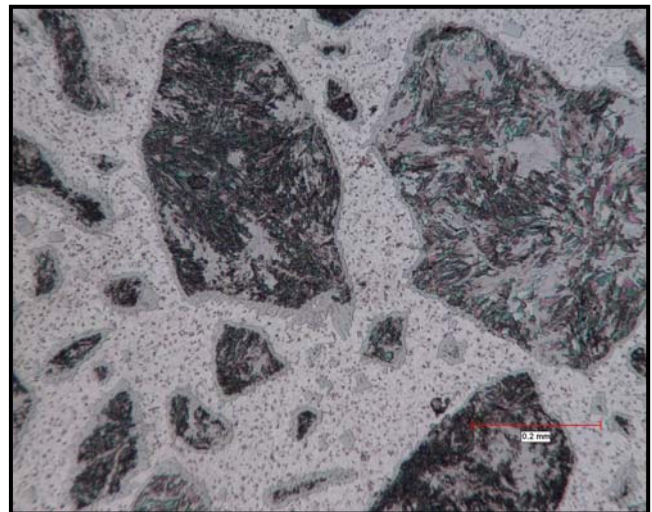
STANDARD SIZES & PACKAGING

Diameter	Packaging	Part #
7/64" (2.8mm)	50# Poly Pak	11957200

OPERATIONAL CHARACTERISTICS / WELDING PARAMETERS*

GMAW		Optimum
Diameter, In. (mm)	7/64 (2.8)	
Current, Amp. DCEP	275 – 325	300
Voltage	17 – 20	19
Shielding Gas	None	
Wire Extension	5/8" - 1"	
WFS	<i>in/min</i> 70 – 100	90
	<i>(m/min)</i> (1.8) – (2.5)	
Position	Flat or 2G	

**Microstructures are parameter sensitive. Use lowest possible heat input.*



MICROSTRUCTURE

100 X

Tungsten Carbides and Borides in a Nickel- Silicon Matrix

Stoody Company

5557 Nashville Road • Bowling Green, KY 42101
1-800-426-1888

PDS-WC-W-005

Revision 0
03/24/05

Notice: The information contained or otherwise referenced herein is presented only as "typical", without guarantee or warranty. Stoody expressly disclaims any liability from any reliance thereon. Typical data are those obtained when welded and tested in accordance with Stoody's internal procedures. Other tests and procedures may produce different results. No data is to be construed as a recommendation for any welding condition or technique not controlled by Stoody.