

**DESCRIPTION**

Stoody 160-E coated electrode consists of tungsten carbide particles in a nickel silicon boron matrix. This microstructure gives Stoody 160-E superior toughness, corrosion and excellent fine particle erosion resistance in slurry type applications.

**TYPICAL DEPOSIT CHARACTERISTICS**

Abrasion Resistance	Excellent
Matrix Hardness Single Layer	HRC 50 - 60
Matrix Hardness Two Layer	HRC 50 - 60
Deposit Layers	2 Maximum
Surface Cross Check	Depends on application
Machinability	No

**TYPICAL APPLICATIONS**

Typical applications include:

- Dredge rotary cutter heads
- Pipe ID & filtering screens
- Drill bits & stabilizers

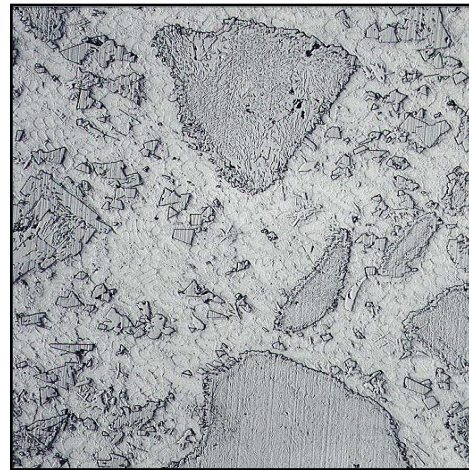
**STANDARD SIZES & PACKAGING**

<u>Diameter</u>	<u>Packaging</u>	<u>Part #</u>
3/16" (4.8mm)	10# Vac Pak	11897400

**OPERATIONAL CHARACTERISTICS / WELDING PARAMETERS\***

<b>SMAW</b>	
Diameter, In. (mm)	<b>3/16 (4.8)</b>
Current, Amp. DCEP	130 – 155
Position	Flat

*\*Microstructures are parameter sensitive. Use lowest possible heat input.*



**MICROSTRUCTURE**

200 X

Tungsten Carbides and Borides in a Nickel- Silicon Matrix