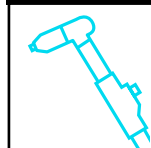


# ARCAIR® GOUGING TORCHES



## SECTION ONE

### ANGLE-ARC® K4000 TORCH

AC  
DC

1000  
AMP

**ANGLE-ARC TORCH MODEL:**  
K4000 with 7ft Cable and Head suits up to 13mm Carbon

**CARBON SIZE:**  
Round: 4 to 13mm  
Flat: 9.5mm and 16mm  
**DUTY CYCLE:**  
100% @ 1000 amps

**AIR PRESSURE:**  
550kPa (80psi)  
**AIR FLOW RATE:**  
790 lpm (28cfm)

**WEIGHT:**  
2.4kg  
**PART NUMBER:**  
AA61082008



Arcair – the inventor of the original air carbon arc process and the industry leader for 50 years – could bring you the superb marriage of proven technology and improved design. Angle-Arc torches work efficiently with the natural angles and movements of the arm and wrist. This major advance in gouging and cutting equipment delivers rugged reliability. Arcair Angle-arc torches are highly efficient metal removal tools for fabrication jobs in steel fabrication plants, shipyards, railroads, farms . . . anywhere people want to save time and money. They speed up weld removal, backgouging, edge preparation, defect repair and many other metal removal jobs. They are ideal for almost all metals – with little or no deformation – because the heat input is so low.

**Features:**

- ▲ New Four Barrel Nozzle Gives Optimum Metal Removal
- ▲ Improved Torch Air Flow
- ▲ Optimised air Flow to Control Noise
- ▲ Natural 15° Torch Angle with 360° swivel Cable
- ▲ Positive Hand Grip
- ▲ Optimum Cable & Torch Weight to Minimise Fatigue
- ▲ High Quality Cable Assembly
- ▲ Rugged construction

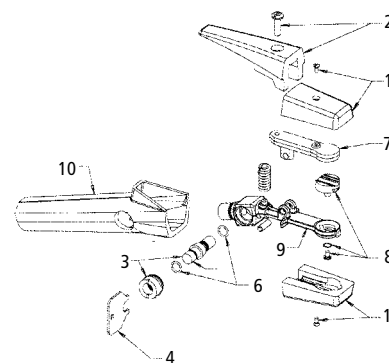
**Ordering Information:**

K4000 with 7ft Cable & Head **Part No. AA61082008**

**Spare Parts:**

Item	Description	Part No.
1	Insulators & Screws	AA94433183
2	Lever & Screws	AA94476066
3	Valve Bonnet	AA94104016
4	Bonnet Wrench	AA94960001
5	Spool & O-Rings	AA94801011
6	O-Ring (2 required)	AA94710036
7	Upper Arm	AA94048088
8	Head & Screw	AA94378368
9	Torch Body	AA94103206
10	Handle	AA94370163

For the full accessory range turn to the accessories section of this book.



### TRI-ARC® FOUNDRY TORCH

AC  
DC

2200  
AMP

**TRI-ARC FOUNDRY TORCH MODEL:**  
Tri-Arc with 7ft Cable and Heads suits 16mm Carbon

**CARBON SIZE:**  
Round: 8 to 19mm  
**DUTY CYCLE:**  
100% @ 2200 amps

**AIR PRESSURE:**  
550kPa (80psi)  
**AIR FLOW RATE:**  
1130 lpm (40cfm)

**WEIGHT:**  
5.8kg  
**PART NUMBER:**  
AA62991424



The Tri-Arc Torch offers one torch body that accepts three types of heads that can be tailored to fit your application best. The Tri-Arc offers different heads to fit in the same torch body to fit all your needs. The Tri-Arc gives you the reliable and rugged design users expect from Arcair torches, just pick the best torch/head combination to fit your gouging applications.

**Features:**

- ▲ New Four Barrel Nozzle Gives Optimum Metal Removal
- ▲ Improved Torch Air Flow
- ▲ Optimised air Flow to Control Noise
- ▲ 360° swivel Cable
- ▲ Positive Hand Grip
- ▲ Optimum Cable & Torch Weight to Minimise Fatigue
- ▲ High Quality Cable Assembly
- ▲ Rugged construction

**Ordering Information:**

Tri-Arc with 7ft Cable & 16mm Heads	<b>Part No. AA62991424</b>
Defect Removal Heads 6 to 19mm	<b>Part No. AA94378370</b>
General Purpose Heads 13mm	<b>Part No. AA94378267</b>
General Purpose Heads 16mm	<b>Part No. AA94378270</b>
General Purpose Heads 19mm	<b>Part No. AA94378273</b>

**Spare Parts:**

Item	Description	Part No.
1	Insulators & Screws	AA94433118
2	Lever & Screws	AA94476034
3	Valve Bonnet	AA94104023
4	Bonnet Wrench	AA94960001
5	Spool & O-Rings	AA94801021
6	O-Ring (2 required)	AA94710036
7	Upper Arm	AA94048110
8	Head & Screw	Refer above
9	Torch Body	AA94103221
10	Handle	AA94370079

For the full accessory range turn to the accessories section of this book.

