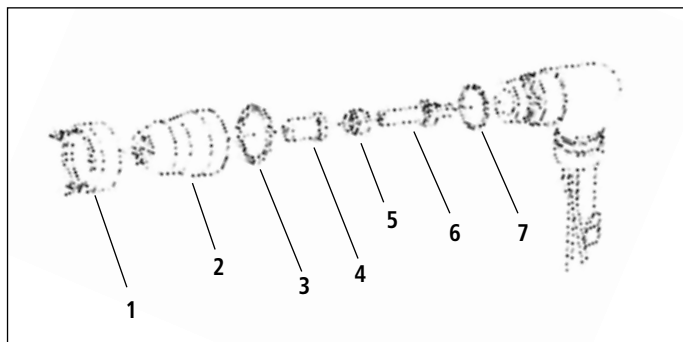


PLASMA TORCHES AND CONSUMABLES

PCH/M-102EC for PakMaster™ 7e, PakMaster™ 9e



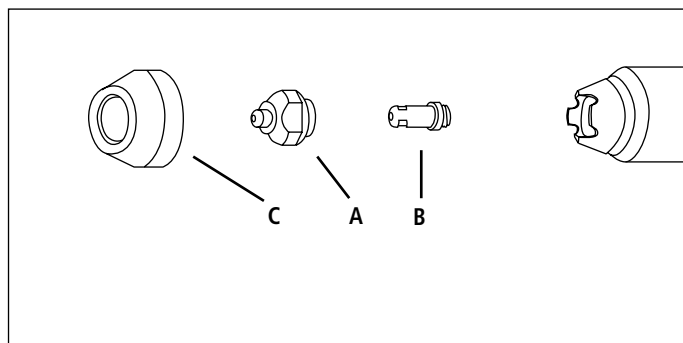
PCH/M-102EC Consumables:

ITEM	DESCRIPTION	PART No.
1	Stand-off Cutting Guide	OTD8/7575
1	Shield Cup, Crown	OTD8/7507
2	Shield Cup, Cutting	OTD8/7500
3	Coil Spring	OTD9/7501E
4	Tip, 40 amp, Cutting	OTD8/7503
4	Tip, 60 amp, Cutting	OTD9/7726
4	Tip, 80 amp, Cutting	OTD9/7728
4	Tip, Gouging	OTD8/7506
5	Gas Distributor, Cutting	OTD8/7501
6	Electrode	OTD9/8402
7	O-Ring	OTD8/0532

Plasma Torch Spare Parts

Torch Head 70°	OTD9/8405
PCH-102EC Torch 70° (6M)	OTD0/7062EC

PCH/M-150 for Pak 15XC



PCH/M-150 Consumables:

ITEM	DESCRIPTION	PART No.
C	Shield Cup - Std - Ceramic Front	OTD9/5750
C	Shield Cup - Std - Metal Front	OTD9/5790
C	Shield Cup - Copper (Tip Exp.)	OTD9/5801*
C	Shield Cup - Ceramic (Tip Exp.)	OTD9/5758
N/S	Shield Cup-Gouging	OTD9/5774
A	Tip 50 amp Air	OTD9/5748
A	Tip 100 amp Air	OTD9/5747
A	Tip 150 amp Air	OTD9/5746
A	Tip 50 amp O2	OTD9/5753*
A	Tip 100 amp O2	OTD9/5752*
A	Tip 150 amp O2	OTD9/5751*
A	Tip 50 amp N2	OTD9/5765*
A	Tip 100 amp N2	OTD9/5766*
A	Tip 150 amp N2	OTD9/5767
A	Tip 150 amp Ar/H2	OTD9/5775*
A	Tip, Gouging 85 amp .078	OTD9/5756*
A	Tip, Gouging 150 amp .120	OTD9/5755
B	Electrode-Air	OTD9/5749
B	Electrode-O2	OTD9/5760*
B	Electrode-N2, Ar-H2	OTD9/5754*

Plasma Torch Spare Parts

PCH-150 70 deg Torch head	OTD9/5743
PCH-150 90 deg Torch head	OTD9/5744*
PCM-150 180 deg Torch head	OTD9/5745*
PCM-145 180 deg Torch head	OTD9/6410*

* Please note these parts are no longer available from CIGWELD these are original US catalogue numbers and are in this book as a reference only. N/S = Not Shown.