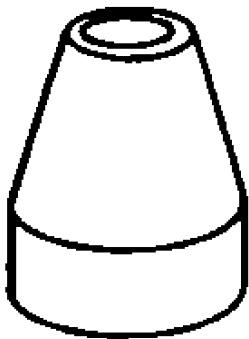


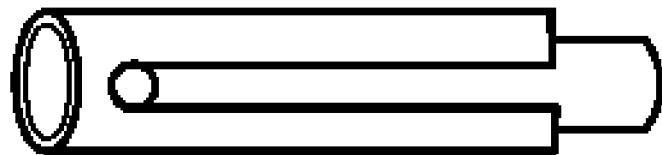
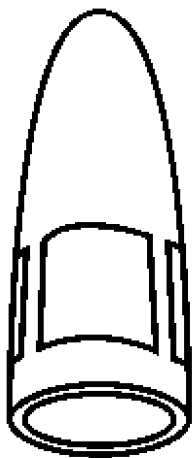
Look for high quality genuine Thermal Arc consumable parts for your plasma welding torches



GENUINE

THERMAL ARC[®]

CONSUMABLES



A THERMADYNE[®] Company

ALWAYS BUY. . . .

GENUINE THERMAL ARC®

CONSUMABLES

Buying what appears to be the least expensive parts does not mean you are getting the most value for your dollar. In fact, buying these parts may cost you more!

Non-genuine parts may result in lower quality cuts and welds.

Non-genuine suppliers can sell at lower prices as they do not supply the value added features of a trained technical support staff and large engineering department. Along with this engineering department comes the highest quality designs to meet your performance requirements. Thermal Arc's designs are thoroughly tested to optimize parts life and performance of each plasma system.

Shorter parts life may result in a higher cost for consumables.

Our manufacturing processes have been designed to produce parts that meet all required design tolerances, and quality levels. Since our parts are manufactured in our facilities, we can ensure that all design tolerances and quality standards are achieved.

Non-genuine parts may damage more costly system components.

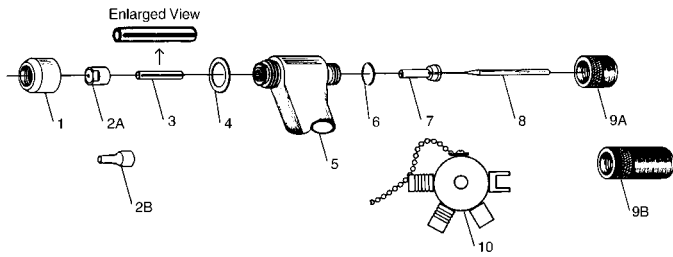
Parts that do not conform to Thermal Arc's specifications can result in damage to other system components such as: torch heads, torch leads and even power sources.

Shorter parts life may increase overhead costs and reduce your productivity.

The cost of your consumables is a small part of the total cost to operate your plasma system. Labor cost and machine overhead costs are significantly increased by system down time. Decreased parts life results in increased parts changes and down time of your plasma machine or CNC system, therefore, increasing your cost to operate your plasma system.



the best value for your dollar!

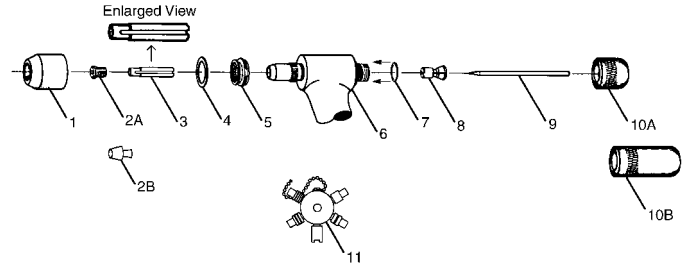


PWH/M 2A TORCH PARTS

Description	Diagram	
	Ref. No.	Part Number
2A COMPLETE SPARE PARTS KIT		5-2984
2A - Torch Head Assembly (70 deg.)		8-2027
2A - Torch Head Assembly (90 deg.)		8-2028
2A - Torch Head Assembly (180 deg. offset)		8-2097
2A - Torch Leads w/out torch head 12.5 ft. / 3.8m		4-2539
2A - Torch Leads w/out torch head 25 ft. / 7.6m		4-2585
2A - Gauge and Wrench Assembly	10	8-2021

PWH/M 2A TORCH PARTS

Description	Diagram	
	Ref. No.	Part Number
2A - Shield Cup (use w/ ext. tip)	1*	8-3236
2A - Shield Cup (use w/ std. tip)	1*	8-2071
2A - Tip (.045) 35A - Std.	2A*	8-2023
2A - Tip (.062) 62A - Std.	2A*	8-2024
2A - Tip (.081) 75A - Std.	2A*	8-2025
2A - Tip (.031) 15A - ext.	2B*	8-2079
2A - Tip (.045) 25A - ext.	2B*	8-2080
2A - Tip (.062) 35A - ext.	2B*	8-2082
2A - Tip (.081) 50A - ext.	2B*	8-2083
2A - Electrode (.093) - std.	8-	8-2033
2A - Electrode (.093) - ext.	8-	8-2006
2A - Electrode (.040) - std.	8-	8-2044
2A - Electrode (.040) - ext.	8-	8-2046
2A - Gas Distributor (.093)	3	8-2040
2A - Gas Distributor (.040)	3	8-2042
2A - Gasket - Shield Cup	4-	8-2036
2A - O-Ring-Electrode Cap	6-	8-2035
2A - Collet (.093 Electrode)	7-	8-2039
2A - Collet (.040 Electrode)	7-	8-2041
2A - Electrode Cap - Standard	9A	8-2032
2A - Electrode Cap - Extended	9B	8-2030

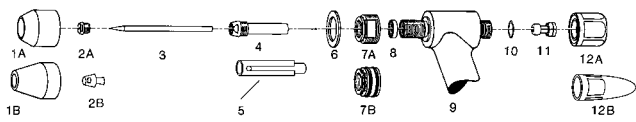


PWH/M 3A TORCH PARTS

Description	Diagram	
	Ref. No.	Part Number
3A TORCH COMPLETE SPARE PARTS KIT		5-2985
3A - Torch Head Assembly (70 deg.)	6	8-3030
3A - Torch Head Assembly (90 deg.)	6	8-3031
3A - Torch Head Assembly (180 deg. offset)	6	8-3032
3A - Torch Leads w/out torch head 12.5 ft. / 3.8m		4-2615
3A - Torch Leads w/out torch head 25 ft. / 7.6m		4-2624
3A - Gauge and Wrench Assembly	11	9-1810
3A - Quick Disconnect Only		5-2990
3A - PWH Handle		9-1757

PWH/M 3A TORCH PARTS

Description	Diagram	
	Ref. No.	Part Number
3A - Shield Cup Standard Weight	1*	8-3038
3A - Shield Cup - 8-3038 with Gas Lens	1*	8-3040
3A - Shield Cup Spot Welding	1*	8-3035
3A - Tip (.014) 10A - Std.	2A*	8-3052
3A - Tip (.022) 15A - Std.	2A*	8-3053
3A - Tip (.031) 30A - Std.	2A*	9-1782
3A - Tip (.046) 50A - Std.	2A*	9-1783
3A - Tip (.062) 75A - Std.	2A*	9-1784
3A - Tip (.081) 100A - Std.	2A*	9-1785
3A - Tip (.093) 130A - Std.	2A*	9-1795
3A - Tip (.031) 30A - ext.	2B*	9-1788
3A - Tip (.046) 50A - ext.	2B*	9-1789
3A - Tip (.062) 75A - ext.	2B*	9-1790
3A - Tip (.081) 100A - ext.	2B*	9-1791
3A - Tip (.093) 130A - ext.	2B*	9-1811
3A - Electrode (.093) - std.	9-	8-2007
3A - Electrode (.093) - ext.	9-	9-1775
3A - Gas Distributor insulating sleeve	3	9-2240
3A - Gasket - Shield Cup	4-	8-3057
3A - Shield Gas Diffuser	5*	8-3059
3A - O-Ring-Electrode Cap	7*	8-0527
3A - Collet	8-	9-1780
3A - Electrode Cap - Standard	10A	9-1779
3A - Electrode Cap - Extended	10B	9-1803

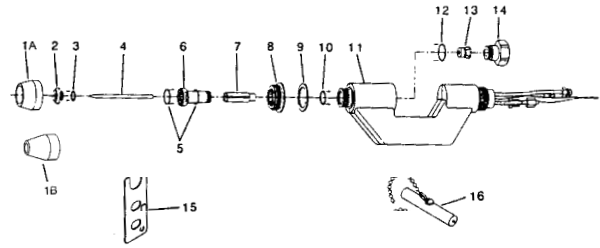


PWH/M 4A TORCH PARTS

Description	Diagram Ref. No.	Part Number
4A TORCH COMPLETE SPARE PARTS KIT		5-2986
4A - Torch Head Assembly (70 deg.)	9	8-4014
4A - Torch Head Assembly (90 deg.)	9	8-4015
4A - Torch Head Assembly (180 deg. offset)	9	8-4016
4A - Torch Head Assembly (180 deg. inline)	9	8-4054
4A - Collar	8	8-4024
4A - Torch Leads w/out torch head 12.5 ft. / 3.8m		4-2525
4A - Torch Leads w/out torch head 25 ft. / 7.6m		4-2544
4A - Gauge and Wrench Assembly		9-1873
4A - Service Tool Kit		5-2932
4A - Lubricant		8-4025
4A - O-Ring Removal Tool		8-4002
4A - O-Ring Installation Tool		8-4003
4A - 7/16" Open End Wrench		8-4053
4A - Quick Disconnect Only		5-2990
4A - PWH Torch Handle		9-5914

PWH/M 4A TORCH PARTS

Description	Diagram Ref. No.	Part Number
4A - Shield Cup (use w/ ext. tip) - Threaded	1A*	8-4064
4A - Shield Cup (use w/ std. tip) - Slip On	1B*	8-4088
4A - Tip (.046) 50A - Std.	2A*	9-1846
4A - Tip (.062) 100A - Std.	2A*	9-1847
4A - Tip (.093) 125A - Std.	2A*	9-1848
4A - Tip (.125) 150A - Std.	2A*	9-1849
4A - Tip (.062) 100A - ext.	2B*	9-1890
4A - Tip (.093) 125A - ext.	2B*	9-1891
4A - Tip (.125) 150A - ext.	2B*	9-1892
4A - Electrode (.187) - std.	3-	9-1827
4A - Electrode (.187) - ext.	3-	9-1834
4A - Liner	4	8-4011
4A - Gas Distributor	5	9-2204
4A - Gasket - Shield Cup	6	8-4069
4A - Shield Gas Diffuser - Threaded	7A	8-4040
4A - Shield Gas Diffuser - Slip On	7B	8-4087
4A - O-Ring-Electrode Cap	10-	8-0530
4A - Collet	11-	9-1876
4A - Electrode Cap Standard	12	8-4158
4A - Electrode Cap - Extended	12	9-1877



PWM-300 TORCH PARTS

Description	Diagram Ref. No.	Part Number
PWM-300 TORCH COMPLETE SPARE PARTS KIT		5-2910
Torch Body	11	8-6649
Torch Leads w/out torch head 12.5 ft. / 3.8m		4-2525
Torch Leads w/out torch head 25 ft. / 7.6m		4-2544
Electrode Gauge	16	8-6653
Lubricant		8-4025
Tip/Liner Wrench	15	8-6517

PWM-300 TORCH PARTS

Description	Diagram Ref. No.	Part Number
Shield Cup - (brass)	1B	8-4373
Tip (.093) 200A	2-	8-4370
Tip (.113) 250A	2-	8-4371
Tip (.125) 300A	2-	8-4372
Electrode	4-	9-1827
Liner	6	8-6509
Gas Distributor Insulating Sleeve	7	8-6651
Gasket - Shield Cup	9-	8-6512
Shield Gas Diffuser	8	8-6652
O-Ring-Electrode Cap	12-	8-0534
Collet	13	8-6650
Electrode Cap - Standard	14	8-6654
O-Ring	3-	9-2863
O-Ring	5-	9-2956
O-Ring	10-	8-0531
Shield Cup Ceramic (Adapter 8-6541)	1A*	8-6542
Shield Adapter (for 8-6542 Cup)	8	8-6541

WORLD HEADQUARTERS: 101 S. Hanley Road • St. Louis, MO 63105 • 314-721-5573 • FAX 314-746-2161

THERMADYNE®

**U.S. CUSTOMER SERVICE: 2200 Corporate Drive • Troy, OH 45373
800-255-5846 • FAX 800-332-0946**



International Offices

International Customer Service
Oakville, Ontario, Canada
Ph: (1) 905-827-9777
Fax: (1) 905-827-9797

Thermadyne Canada
Oakville, Ontario Canada
Ph: (1) 905-827-1111
Fax: (1) 905-827-3648

Thermadyne UK
Chorley, England
Ph: (44) 1257-261755
Fax: (44) 1257-224800

Thermadyne Asia Sdn. Bhd.
Kuala Lumpur, Malaysia
Ph: (603) 6092-2988
Fax: (603) 6092-1085

Cigweld Australia
Melbourne, Australia
Ph: (61) 3-9474-7400
Fax: (61) 3-9474-7510

Unique Welding Alloys
Johannesburg, South Africa
Ph: (27) 11-917-3600
Fax: (27) 11-917-8580

Thermadyne Victor Brasil
Rio de Janeiro, Brazil
Ph: (55) 21-2-485-8990
Fax: (55) 21-2-485-8735

Thermadyne Middle East
Dubai, United Arab Emirates
Ph: (971) 4-332-9060
Fax: (971) 4-332-5484

Thermadyne de Mexico
Mexico City, Mexico
Ph: (52) 55-5696-7407
Fax: (52) 55-5696-7757

Thermadyne Japan
Osaka, Japan
Ph: (81) 6-4809-8411
Fax: (81) 6-4809-8412

Thermadyne Europe
Milan, Italy
Ph: (39) 039-204-991
Fax: (39) 039-204-9922